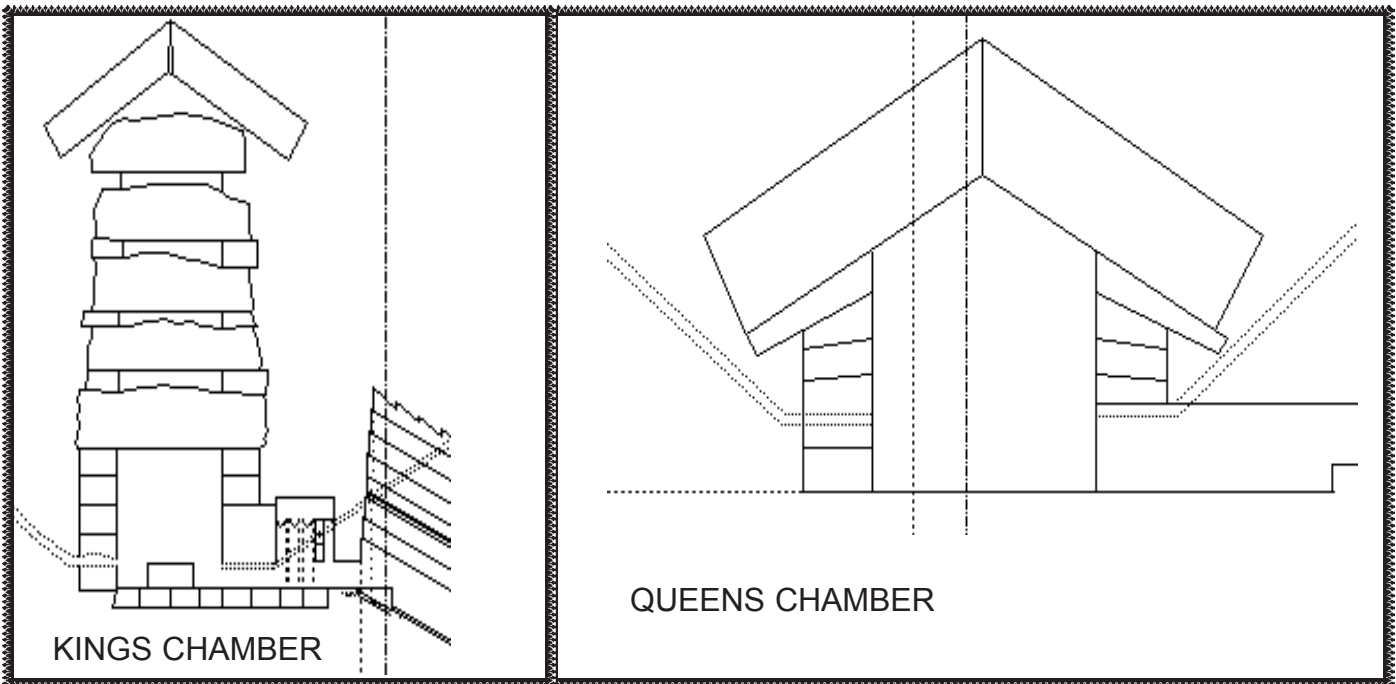
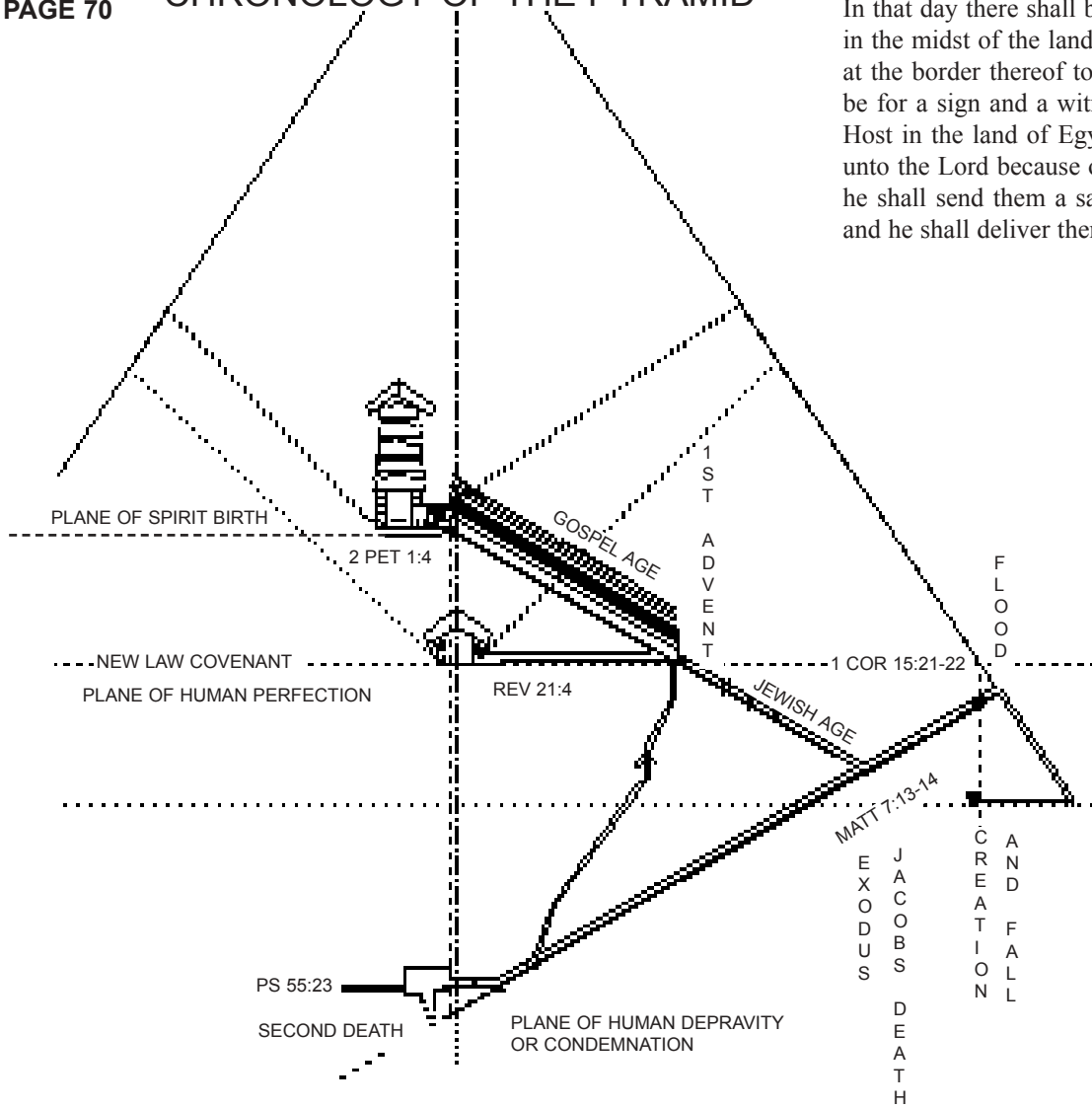


# CHRONOLOGY OF THE PYRAMID

In that day there shall be an altar to the Lord in the midst of the land of Egypt and a pillar at the border thereof to the Lord and it shall be for a sign and a witness unto the Lord of Host in the land of Egypt; for they shall cry unto the Lord because of the oppressors, and he shall send them a savior and a great one, and he shall deliver them. Isaiah 19:19-20



The following pages on the pyramid are not intended to be a complete work on the subject. For that, we recommend the third volume, of Studies in the Scriptures, and Edgar's book on the great pyramid. The only problem with Edgar's book, is that it is quite lengthy, involved and hard to sort out the basic chronology involved. Our intention is to try to condense the basics down into an easier to understand form, and to show that the calculations are exact, or nearly so. The method of dating in the pyramid, is related to the 25 inch cubit, but you would understand it better, if we tell you that we count a year per pyramid inch. A pyramid inch is not a British inch, but is very close ( 999/1000) so for purposes of discussion, we will ignore the difference.

### The Pyramid Demonstrates the Divine Plan

The great pyramid demonstrates the Divine plan of the ages, as it marks out the plan in a mathematical and symbolic manner. It first shows us the world before the flood, and then leads us up through the Patriarchal age, to the giving of the law, and the start of the Jewish age, as marked by the granite plug. Just as the law blocked the way to true salvation, so did this plug. The passage, as it moves upward from that point, then shows the plan of God, to uplift mankind back into perfection. The descending passage, that goes down to the pit, shows the course that mankind, and all human institutions are taking without God. That this passage ends in the pit, symbolizes the destruction of all human institutions, and eventually all individuals, that are in opposition to the kingdom, and God's plan. This descending passage marks two important dates, **1874 and 1914**, which shows that the process of removing the present system, has started at that time. That was the time of the 40 year harvest, which began the process of removing the false church.

### Jewish Age

The Jewish age was the first step upward for mankind, but only the Lord was able to keep the law perfectly. By his doing so, he was able to pay the price for the rest of us. This date is marked by the intersection of a vertical line, dropped from the start of the grand gallery, to the floor. That intersection represents **April of the year 33 AD or the crucifixion**. This event opened up the way or the grand gallery, for the purpose of bringing of many sons to glory in the gospel age. The Gospel age is represented, in symbol, by the grand gallery. **In the next age, the rest of the world will only be able to ascend to the level of human perfection, which is represented by the floor of the queens chamber.**

### Gospel Age

The gospel age, as represented by the grand gallery, is shown to be drawing rapidly to a close. As we reach the top step, we find the date **1914 AD**, to be again clearly marked, and this confirms that this was an important date. This should not surprise us, since the harvest parallel shows us the same thing. This is not to say that the gospel age has ended, as some have mistakenly concluded, but it does show us that there were some drastic changes, as far as the false church system was concerned. The grand gallery ends, but the way continues into the kings chamber, and at what point the call ends we don't know.

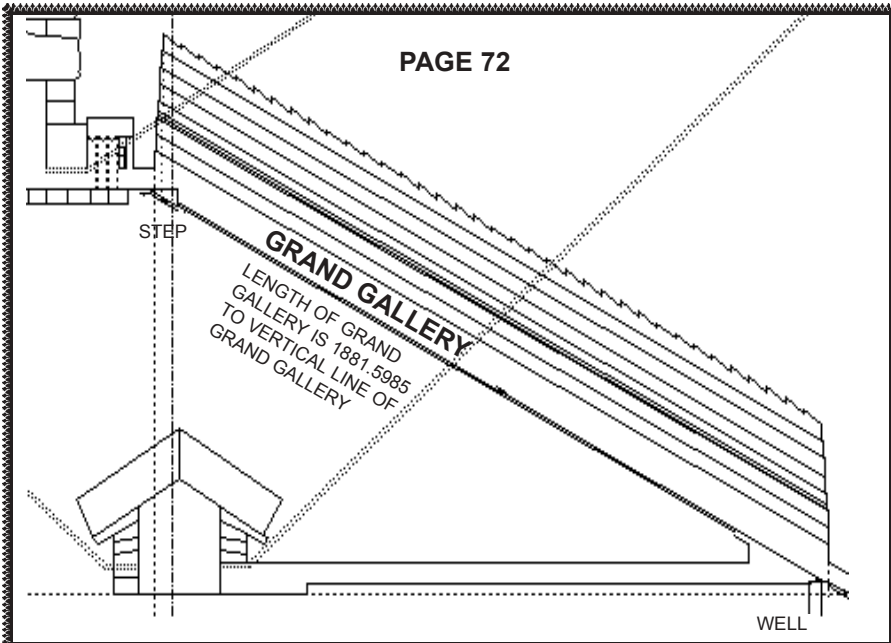
The chronology, as presented on these pages, is based on the last measurements of the Edgar's, in which they found that the lengths of some of the passages were originally measured wrong. The symbolic lessons of the passages, as presented in the third volume, are correct, but the method of arriving at the dates had to be adjusted, as explained in the 1929 pyramid discourse at the beginning of Edgar's book. The final results of this change actually show the Divine plan chronology much more clearly.

### One year Change in the Flood Again!

The only exception that we have made to Edgar's figures, has to do with the date of the flood. This became a problem, because he used the date for the flood, given in the second volume, page 43. For the reasons which we have given earlier in this work, we had to shift that date by one year. Instead of using the vertical line of the roof passage as marking the date of the flood, we have instead marked off a theoretical vertical line, that passes through the descending passage at 2472.25 BC. This gives us some very interesting results, where this vertical line intersects the platform level. We get 4128.0263 BC, which is very close to **the creation of Adam in 4128.25 BC**. Remember these dates are given in chronological whole numbers.

### The Flood and Baptism

Both Adam's creation, and his fall, are found to be represented, the one method showing the creation and the other the fall in the garden. This seems to confirm that Pastor Russell, the founder of the Bible Students, was correct in his idea that Adam only spent two years in the garden. To help show that this new flood date is correct, **we have calculated the amount of years from the end of the corrected flood date, to the baptism of Christ, and we get 2471.25, plus 28.75, (Oct 29) = 2500**. This is similar to the calculation in Edgar's book, volume 2, pages 139-140, but from the end of the new flood date instead. This shows that there is a connection between the end the flood and the baptism of the holy spirit. *1 Pet 3:20-21) 20 who once were disobedient, when the patience of God kept waiting in the days of Noah, during the construction of the ark, in which a few, that is, eight persons, were brought safely through {the} water. 21 Corresponding to that, baptism now saves you-- not the removal of dirt from the flesh, but an appeal to God for a good conscience-- through the resurrection of Jesus Christ, (NAU)* This shows us in picture that the anointing of Jesus was the beginning of the anti-typical baptism, which will include not only the church, but also the world!



## Floor of Queens Chamber

The floor of the queens chamber represents human perfection. This is represented by the dotted horizontal line.

## The Birth of Christ

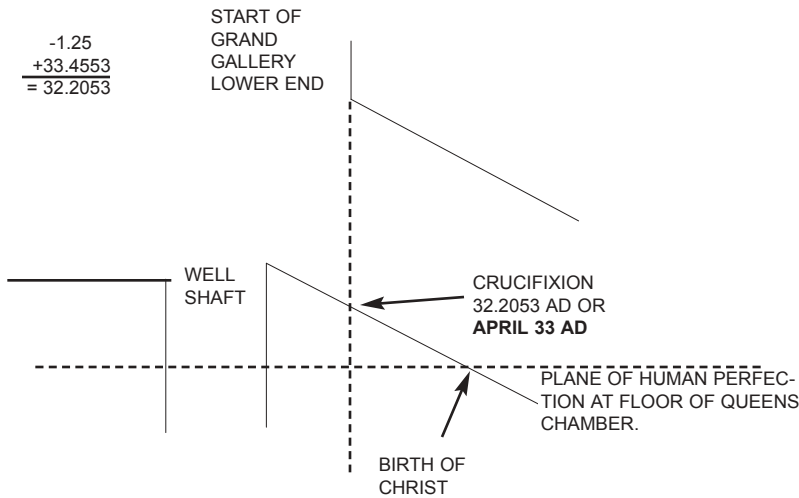
The point where this line intersects the floor of the first ascending passage marks **the birth of Christ in 1.25 BC (Oct 2 BC)**. The view on the left is the entire gallery. The intersect point is just to the right of the well. See the larger view below.

## The Crucifixion Date

If you drop a vertical line from the beginning of the grand gallery down to the floor of the first ascending passage this intersects the floor at a point which is 33.4553 pyramid inches further up the passage.

**This new point is the crucifixion which occurred in April of the yr 33 AD (32.2053)** as marked in the pyramid. The actual date was 32.25.

FIRST ASCENDING PASSAGE, WELL AND THE GRAND GALLERY SHOWING THE BIRTH AND CRUCIFIXION OF JESUS



## Length of the Grand Gallery

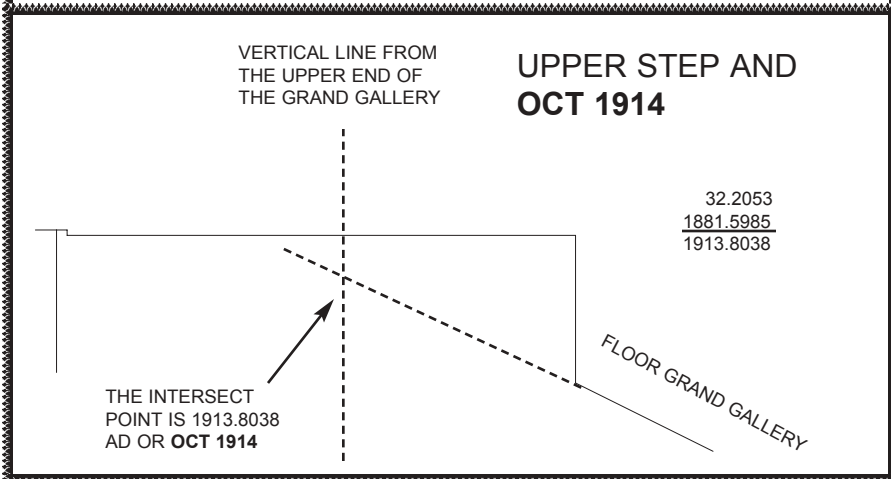
If we measure up the grand gallery and through the step to where it would intersect a vertical line dropped from the upper end of the grand gallery we find that the total length of the grand gallery to this intersect point is **1881.5985 inches or years**.

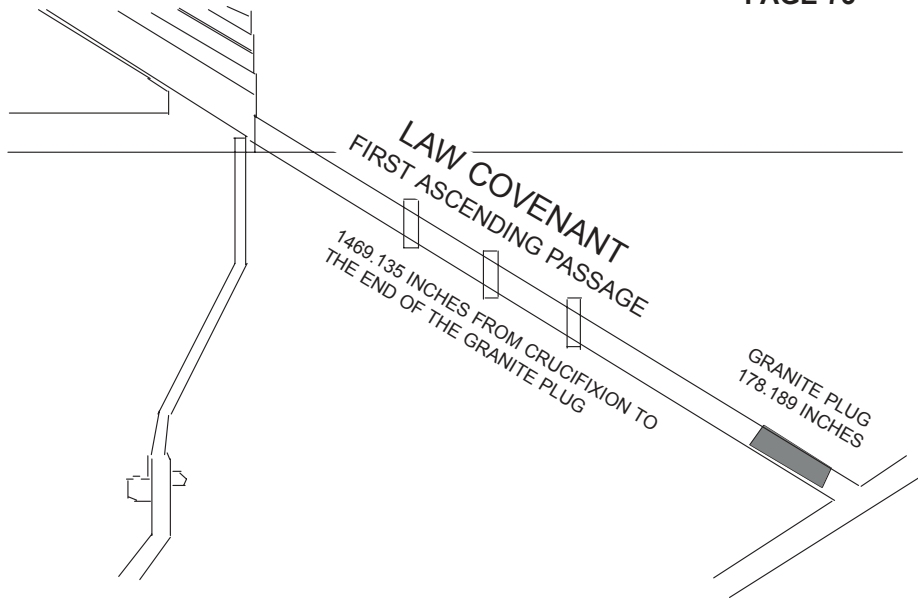
## The Date 1914 Again

If we add this length to the date of the crucifixion at the lower end of the grand gallery we get **Oct 1914 (1913.8038)** at the intersect point. See the diagram at the left.

## The Birth of Christ is the Start Point

**The birth of Christ 1.25 BC** is the starting point that all other dates are measured from on these charts.





## The First Ascending Passage

If we start at the date of the crucifixion and measure back down the descending passage to the lower end of the granite plug we get 1469.135 inches. This date by itself does not reach to the start of the law covenant as we would expect if this passage represents the Jewish age.

### Date of Law Covenant

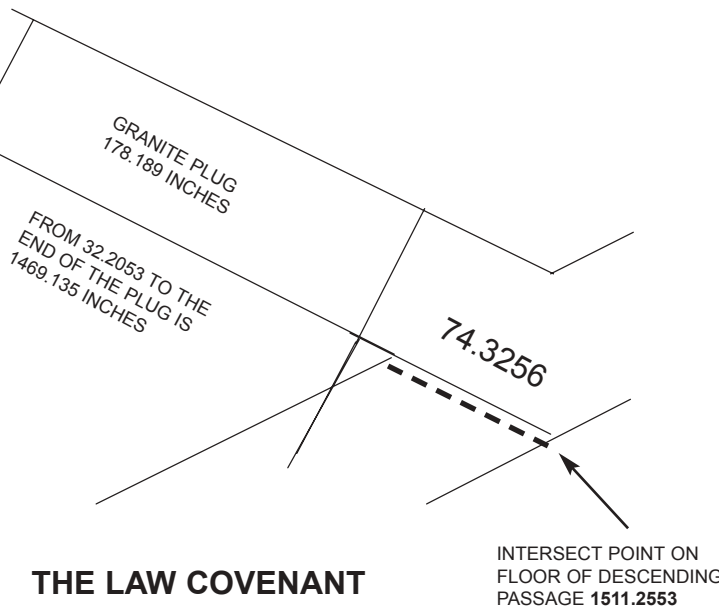
If we add in the length of the granite plug we move another 178.189 py inches or years further back in the stream of time. **This reaches back to 1615.1187 BC. The beginning of the exodus out of Egypt. The giving of the law was 1615.25 BC or Oct 1616 BC.**

This is the same as if you had slid the granite plug down the shaft 1 exact length. It then extends the length of the measurement by 178.189 py inches.

It may be that the reason that the granite plug needs to be slid out of the ascending passage, in order to get the correct date is that the giving of the law was the first step in satisfying justice.

The sliding out of the plug would in symbol show that justice could be taken out of the way by the keeping of the law.

The law provided a way by which justice could be satisfied but as we know only Christ was able to do it.



### THE LAW COVENANT AND THE GRANITE PLUG

## The Granite Plug

In the third volume, *Studies in the Scriptures*, we find this statement on the granite plug {*The only entrance to the "Queen's Chamber," or to the Grand Gallery," was by way of the "Well," the First Ascending Passage" having been originally impassable by reason of the granite "Plug." Thus the stone "Witness" testifies that by the Law Call or Law Covenant none of the fallen race could reach either life (human life) or immortality (the divine nature). Though the "First Ascending Passage" was a way, yet none could walk in it. So the Law Covenant was a passageway to life; but because of the weakness of the flesh, none could walk in it so as to attain the life offered.*}

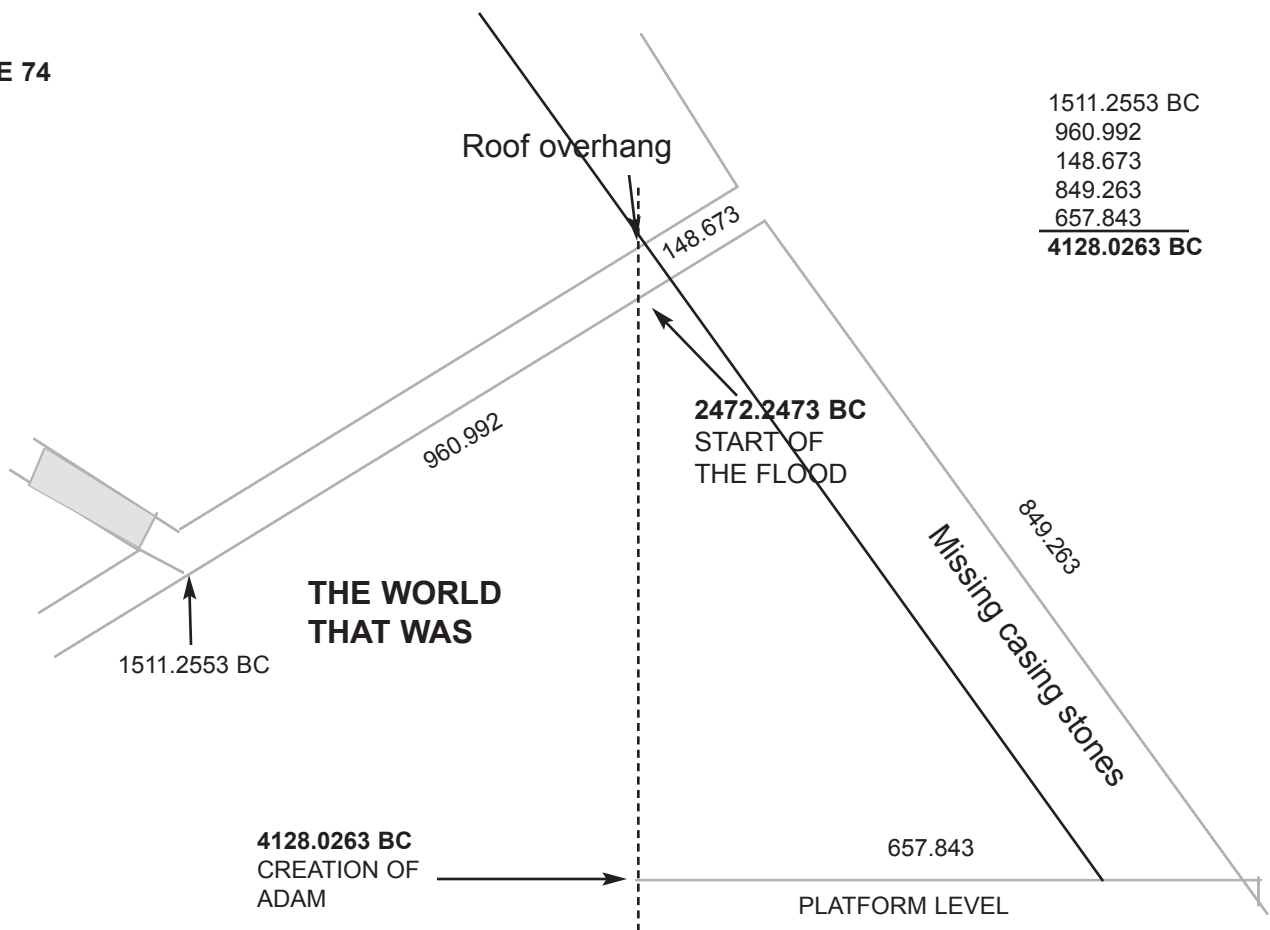
## A Key Point on the Floor

In order to continue on with our measurements, up or down the descending passage, we need to establish a date for the intersect point, on the floor. It turns out that the distance from the crucifixion to the floor of the descending passage, is 1543.464 py inches. We therefore get a date for this point on the floor, as **1511.259 BC or Oct 1512 BC.**

We will use this date on the next page, to trace our way back to the entrance of the pyramid and to the creation of Adam. Later we will come back to this same date and point, and from there measure down the passage, to establish the chronology associated with the pit.

## The New and Living Way

From this we can see that Christ has now opened, a new and living way for us.



### Recalculating from the New Flood Date

The calculations shown above, are different than the ones found in Edgar's book, volume 3, page 95. In Edgar's calculations, he used the vertical line of the roof, beginning at the point that he felt indicated the date of the flood. He there gives the date 2472.25 BC, as the date for the drying up of the flood. As we have already shown earlier in this booklet, this is not correct, because it is 1654 yrs to the start of the flood and not to the end. **The start of the flood should be 2472.25 BC, and the end should be 2471.25 BC.**

It appears that the original idea was correct, but that it needed some adjustment and modification, due to the problem with the flood date. We decided to re-do the calculations, adjusting the vertical flood line until it was lined up at the start of the correct flood date, instead of at the roof point. As you can see, this came out very close to the date of the creation of Adam, at the junction of the vertical flood line and the horizontal platform level, that runs horizontally from the top of the small step.

### The Creation Date for Adam

These calculations, remember, reach all the way back to the date of the birth of Christ, at the top of the first ascending passage 1.25 BC. The point of intersection with that passage and the descending passage, is 1511.2553 BC. The distance up to the new vertical flood line, is 960.992 py inches. From there to the outer casing stone surface, is 148.673 py inches. Down the outside of the pyramid, to the platform level, is still 849.263 py

inches. From there, over to the vertical flood line, is now 657.843 py inches. **Adding these all up, gives us 4128.0263 BC, or very close to 4128.25 BC, (Oct 4129), which was the creation of Adam.**

Since the roof overhang is used in other calculations, we believe that it also a valid date point, even if it is not the date of the flood. If we drop a vertical line from the roof overhang, it's still possible to get the date of the fall of Adam. This is a distance of one inch upward on the descending passage, and is the 1 year we needed to correct for the flood date.

### The Date of the Fall of Adam

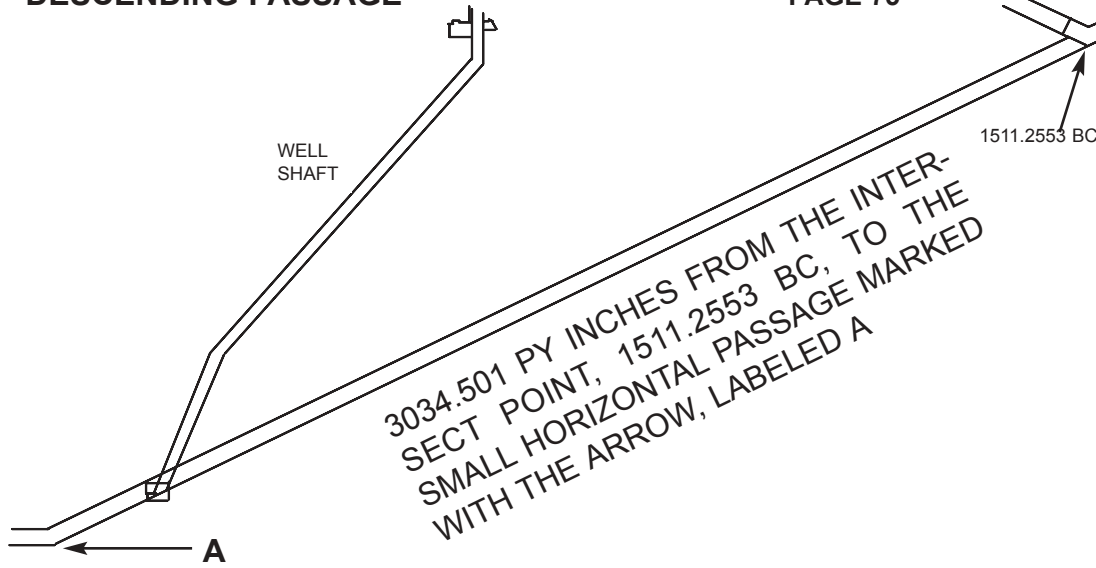
The distance at the platform level, is shortened .897 inches from its original length. These two figures add up to 1.897 inches. **If we subtract this figure from the date of creation, marked by the pyramid calculations, we get 4128.0263 - 1.897 or 4126.13 BC.**

### 2 Years in the Garden

This is very close to the actual figure of 4126.25 BC, for the fall in the garden. **The figure of 1.9 inches, is very close to the 2 years that Adam spent in the garden before the fall.**

The creation and the two years spent in the garden, are both confirmed by the vertical lines, dropped from the flood date and the roof overhang down to the platform level.

**DESCENDING PASSAGE**



**To the Small Horizontal Passage**

If we measure downward from the intersect point, 1511.2553 BC, to the start of the small horizontal passage, we get 3034.501 py in. This is to the point marked A in the diagram on the left.

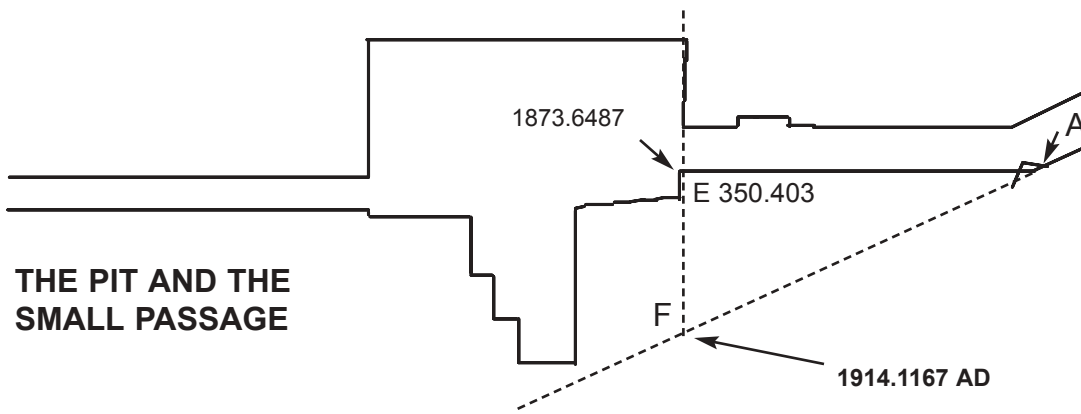
**An Intersecting Line = 1914**

If we measure on the same angle, down through the stone until we reach the dotted vertical line, that was dropped from the upper end of the grand gallery, we get another 390.871 py inches, at point (F). See the middle and lower diagram. **This gives us 1914.1167 which is slightly long versus 1913.75.**

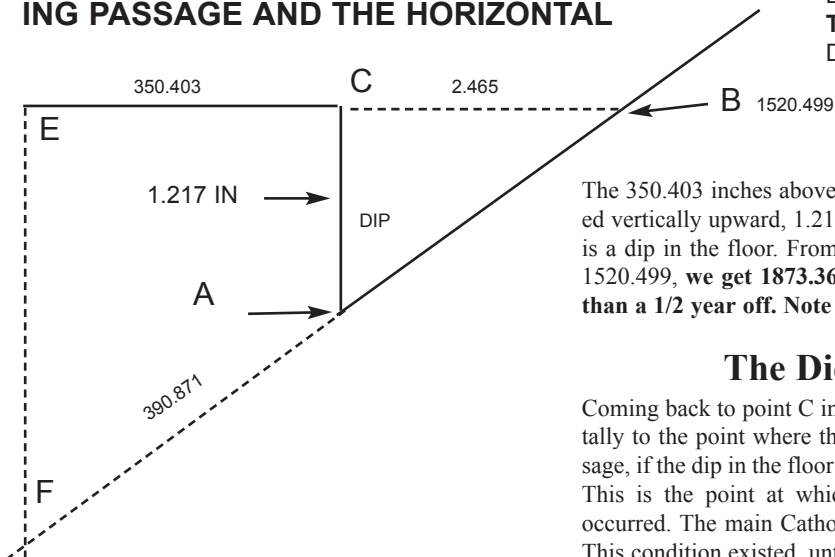
**The Dotted Vertical Line**

The vertical dotted line, is the same line that is dropped from the upper end of the grand gallery, through the step, to give us the date 1914. **The reason there is some uncertainty on these measurements, is because the end of the passage is not even or square.**

**THE PIT AND THE SMALL PASSAGE**



**THE INTERSECTION BETWEEN THE DESCENDING PASSAGE AND THE HORIZONTAL**



LUTHER WAS SEPARATED FROM PAPACY AT THE DIET OF WORMS APRIL 17, 1521. THE DATE 1520.499 IS JUNE 1521. REPRINT 3574-75

**Oct 1874 Again**

The 350.403 inches above, are measured horizontally, from point C, which is located vertically upward, 1.217 inches from the end of the passage, at point A. Point A is a dip in the floor. From point B to C is 2.465. Adding distance B-C to 1520.499, we get **1873.367 AD, which is slightly short of Oct 1874 AD but less than a 1/2 year off. Note that this is a slight revision from a previous edition.**

**The Diet of Worms in April 1521**

Coming back to point C in the diagram above, if we construct a dotted line horizontally to the point where the horizontal passage would intersect the descending passage, if the dip in the floor were not there, (starting at point B), **we get 1520.499 AD.** This is the point at which the division between Catholicism and Protestantism occurred. The main Catholic house was separated from the reformers, at that time. This condition existed, until the judgment of the rest of the house (1874-1914).